

IO18012F

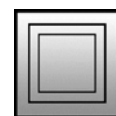
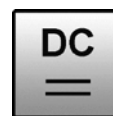
Inductive sensors

All-steel sensors

- / one-piece stainless steel housing
- / IO-Link
- / short-circuit and reverse polarity protection
- / M12-Connector



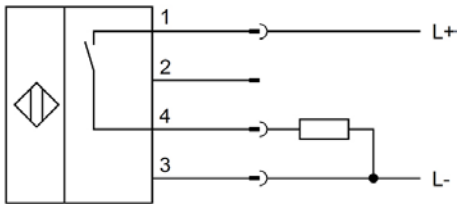
chip immune to iron, aluminum,
stainless steel, brass, copper, titanium



TECHNICAL DATA

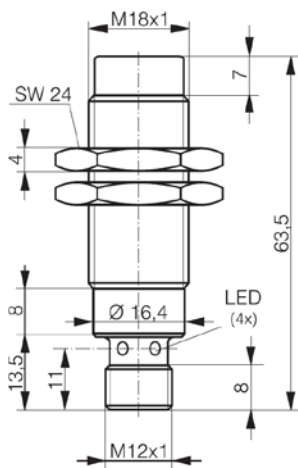
mounting	non flush
switching distance	5mm
output signal	pnp, no
operating voltage	10 ... 30V DC
ripple	≤ 20%
current consumption (w/o load)	≤ 10mA
output current (max. load)	200mA
voltage drop (max. load)	≤ 2V DC
norm measuring plate	18mm x 18mm x 1mm, FE360
hysteresis	≤ 15%
repeat accuracy	0.35mm
correction factors (ST37 / Alu / Ms)	1.0 / 1.7 / 1.7
correction factors (Cu / VA: 1mm / VA: 2mm)	1.5 / 0 / 0.2
temperature drift	≤ 10%
switching frequency	≤ 200Hz
short-circuit protection	+
reverse polarity protection	+
display	0 ≤ s ≤ 0,8s _r : LED yellow 0,8s _r ≤ s ≤ s _r : LED yellow blinking
dimensions	M18 x 1
length (thread / complete)	35mm / 63,5mm
housing material	V2A (1.4305)
max. tightening torque	50Nm
material thickness (active surface)	0.6mm
line length (max.)	300m
operating temperature	-25 ... +85°C
pressure resistance (active surface)	60bar
degree of protection (EN 60529)	IP67, IP69k
connection	M12-Connector
connection accessories	e.g. VK200025
mounting accessories (universal holder)	AY000117

Connection

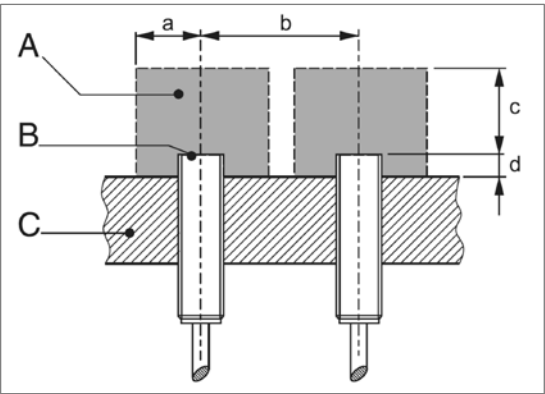


Colors: 1 = BN (brown), 2 = WH (white), 3 = BU (blue), 4 = BK (black)
Functions: 1 = L+, 2 = PNP NC, 3 = L-, 4 = PNP NO

Dimensional drawing



Installation conditions



a	10mm
b	80mm
c	15mm
d	aluminum: 21mm steel: 23mm brass: 23mm stainless steel: 24mm
A	metal free zone
B	active surface
C	support

SAFETY WARNINGS:

Before initial operation, please make sure to follow all safety instructions that may be provided in the product information!
Never use these articles in applications where the safety of a person depends on their functionality.